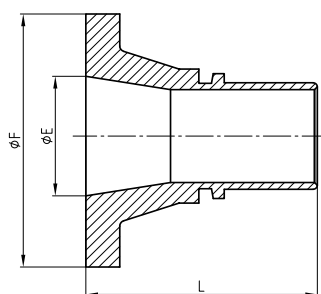


Flanged hose fittings

Hose fitting with collar



Article	Size	Ø E	Ø F	approx. L
SB013	DN13	17.3	45	68
SB019	DN19	22.3	58	82
SB025	DN25	28.5	68	82
SB032	DN32	37.2	78	84
SB038	DN38	43.1	88	82
SB050	DN50	54.5	102	94
SB065	DN65	70.3	122	103
SB075	DN75	82.5	138	117
SB100	DN100	107.1	162	165
SB150	DN150	159.3	218	233

According to EN 14420-4 with flange
Flanged hose fitting suitable for
25 bar operating pressure (PN 25)
Hose fitting made of polypropylene PN 10

We also offer the PTFE-lined variant,
see page 74.

Other pressure ratings upon request

Materials:
For the abbreviation, see Materials register

Other materials upon request

Hose fitting
with collar and loose-type
flange, type SB



Hose fitting
with fixed flange,
type SF



Order number	DN	Flange Pressure ratings	Material Socket/flange
SB 013SS SB 013SSST SB 013ST SF 013SS SF 013ST	13 (1/2")	DN 15 PN 40	SS/SS SS/ST ST/ST SS ST
SB 13ASA150SS SB 13ASA150SSST SB 13ASA150ST SF 13ASA150SS SF 13ASA150ST	13 (1/2")	ASME B16.3 150 lbs. 1/2"	SS/SS SS/ST ST/ST SS ST
SB 019SS SB 019SSST SB 019ST SF 019SS SF 019ST	19 (3/4")	DN 20 PN 40	SS/SS SS/ST ST/ST SS ST
SB 019ASA150SS SB 019ASA150SSST SB 019ASA150ST SF 019ASA150SS SF 019ASA150ST SB 019ASA300ST SF 019ASA300ST	19 (3/4")	ASME B16.3 150 lbs. 3/4" ASME B16.3 300 lbs. 3/4"	SS/SS SS/ST ST/ST SS ST ST/ST ST
SB 025SS SB 025SSST SB 025ST SB 025PP SB 025PPST SF 025SS SF 025ST	25 (1")	DN 25 PN 40	SS/SS SS/ST ST/ST PP/PP PP/ST SS ST
SB 025ASA150SS SB 025ASA150SSST SB 025ASA150ST SF 025ASA150SS SF 025ASA150ST	25 (1")	ASME B16.3 150 lbs. 1"	SS/SS SS/ST ST/ST SS ST
SB 025ASA300ST SF 025ASA300ST	25 (1")	ASME B16.3 300 lbs. 1"	ST/ST ST
SB 032SS SB 032SSST SB 032ST SB 032PP SB 032PPST SF 032ST SF 032SS	32 (1 1/4")	DN 32 PN 40	SS/SS SS/ST ST/ST PP/PP PP/ST ST SS
SB 032ASA150SS SB 032ASA150SSST SB 032ASA150ST SF 032ASA150SS SF 032ASA150ST	32 (1 1/4")	ASME B16.3 150 lbs. 1 1/4"	SS SS/ST ST/ST SS ST
SB 032ASA300ST SF 032ASA300ST	32 (1 1/4")	ASME B16.3 300 lbs. 1 1/4"	ST/ST ST

Order number	DN	Flange Pressure ratings	Material Socket/flange
SB 038ST SB 038SS SB 038SSST SB 038STPP SB 038PP SF 038ST SF 038SS	38 (1 1/2")	DN 38 PN 40	ST/ST SS/SS SS/ST ST/PP PP/PP ST SS
SB 038ASA150ST SB 038ASA150SS SB 038ASA150SSST SF 038ASA150ST SF 038ASA150SS	38 (1 1/2")	ASME B16.3 150 lbs. 1 1/2"	ST/ST SS/SS SS/ST ST SS
SB 038ASA300ST SF 038ASA300ST	38 (1 1/2")	ASME B16.3 300 lbs. 1 1/2"	ST/ST ST
SB 050ST SB 050STSS SB 050SS SB 050MSST SB 050MS SB 050ALST SB 050AL SB 050PPST SB 050PP SF 050ST SF 050SS	50 (2")	DN 50 PN 16	ST/ST ST/SS SS/SS MS/ST MS/MS AL/ST AL/AL PP/PP PP/PP ST SS
SB 050ASA150ST SB 050ASA150SSST SB 050ASA150SS SF 050ASA150ST SF 050ASA150SS	50 (2")	ASME B16.3 150 lbs. 2"	ST/ST SS/ST SS/SS ST SS
SB 050ASA300ST SF 050ASA300ST	50 (2")	ASME B16.3 300 lbs. 2"	ST/ST ST
SB 065ST SB 065SSST SB 065SS SB 065MSST SB 065MS SB 065ALST SB 065AL SB 065PPST SB 065PP SF 065ST SF 065SS	63 (2 1/2")	DN 65 PN 16	ST/ST SS/ST SS/SS MS/ST MS/MS AL/ST AL/AL PP/ST PP/PP ST SS
SB 065ASA150ST SB 065ASA150SSST SB 065ASA150SS SF 065ASA150ST SF 065ASA150SS	63 (2 1/2")	ASME B16.3 150 lbs. 2 1/2"	ST/ST SS/ST SS/SS ST SS
SB 065ASA300ST SF 065ASA300ST	63 (2 1/2")	ASME B16.3 300 lbs. 2 1/2"	ST/ST ST

Flanged hose fittings

According to EN 14420-4 with flange
Flanged hose fitting suitable for
25 bar operating pressure (PN 25)
Hose fitting made of aluminium PN 16
Hose fitting made of polypropylene PN 10

Apart from that, we offer the
PTFE-lined variant, see page 74.

DN: Internal hose diameter in mm

Other pressure ratings upon request

Welding collar according to EN 1092-1 PN 16

Materials:
For the abbreviation, see Materials register

Other materials upon request

Hose fitting
with collar and loose-type
flange, type SB



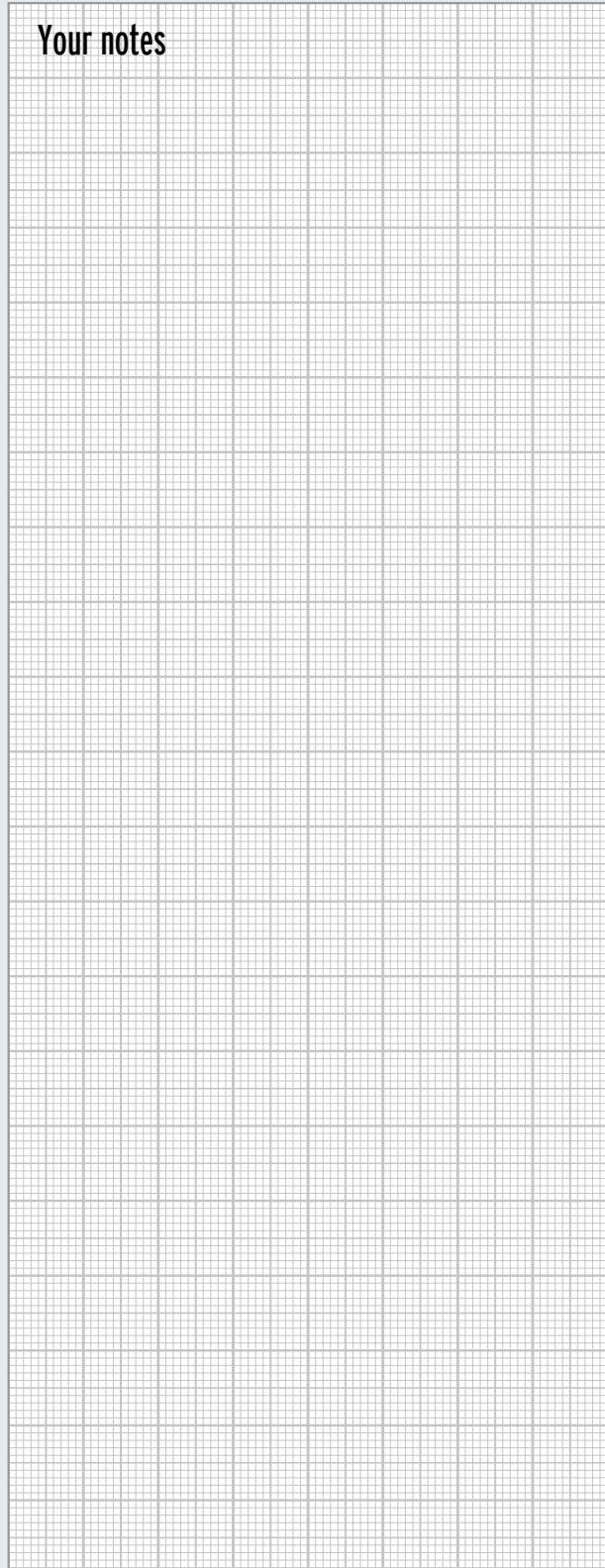
Hose fitting
with fixed flange,
type SF



Order number	DN	Flange Pressure ratings	Material Socket/flange		
SB 075ST	75 (3")	DN 80 PN 16	ST/ST		
SB 075SSST			SS/ST		
SB 075SS			SS/SS		
SB 075MSST			MS/ST		
SB 075MS			MS/MS		
SB 075ALST			AL/ST		
SB 075AL			AL/AL		
SB 075PPST			PP/ST		
SB 075PP			PP/PP		
SF 075ST			ST		
SF 075SS			SS		
SB 075ASA150ST	75 (3")	ASME B16.3 150 lbs. 3"	ST/ST		
SB 075ASA150SSST			SS/ST		
SB 075ASA150SS			SS/SS		
SB 075ASA300ST	75 (3")	ASME B16.3 300 lbs. 3"	ST/ST		
SF 075ASA300ST			ST		
SB 100ST	100 (4")	DN 100 DN 16	ST/ST		
SB 100SSST			SS/ST		
SB 100SS			SS/SS		
SB 100MSST			MS/ST		
SB 100MS			MS/MS		
SB 100ALST			AL/ST		
SB 100AL			AL/AL		
SB 100PPST			PP/ST		
SB 100PP			PP/PP		
SF 100ST			ST		
SF 100SS			SS		
SB 100ASA150ST			100 (4")	ASME B16.3 150 lbs. 4"	ST/ST
SB 100ASA150SSST					SS/ST
SB 100ASA150SS					SS/SS
SF 100ASA150ST	ST				
SF 100ASA150SS	SS				
SB 100ASA300ST	100 (4")	ASME B16.3 300 lbs. 4"	ST/ST		
SF 100ASA300ST			ST		
SB 125SSST	125 (5")	DN 125 PN 16	ST/ST		
SB 125STSS			ST/SS		
SB 125SS			SS/SS		
SF 125ST			ST		
SF 125SS			SS		

Order number	DN	Flange Pressure ratings	Material Socket/flange
SB 125ASA150ST SB 125ASA150SSST SB 125ASA150SS SF 125ASA150ST SF 125ASA150SS	125 (5")	ASME B16.3 150 lbs. 5"	ST/ST SS/ST SS/SS ST SS
SB 125ASA300ST SF 125ASA300ST	125 (5")	ASME B16.3 300 lbs. 5"	ST/ST ST
SB 150SSST SB 150STSS SB 150SS SB 150MSST SB 150MS SB 150ALST SB 150AL SF 150ST SF 150SS	150 (6")	DN 150 PN 16	ST/ST ST/SS SS/SS MS/ST MS/MS AL/ST AL/AL ST SS
SB 150ASA150ST SB 150ASA150SSST SB 150ASA150SS SF 150ASA150ST SF 150ASA150SS	150 (6")	ASME B16.3 150 lbs. 6"	ST/ST SS/ST SS/SS ST SS
SB 150ASA300ST SF 150ASA300ST	150 (6")	ASME B16.3 300 lbs. 6"	ST/ST ST
SB 200SSST SB 200STSS SB 200SS SF 200ST SF 200SS	200 (8")	DN 200 PN 16	ST/ST ST/SS SS/SS ST SS
SB 200ASA150ST SB 200ASA150SSST SB 200ASA150SS SF 200ASA150ST SF 200ASA150SS	200 (8")	ASME B16.3 150 lbs. 8"	ST/ST SS/ST SS/SS ST SS
SB 200ASA300ST SF 200ASA300ST	200 (8")	ASME B16.3 300 lbs. 8"	ST/ST ST

Your notes



Flanged hose fittings, heavy design

Suitable for 18 bar operating pressure (PN 18)
at 210°C steam

Type DB

hose fitting, heavy design with collar and
loose-type flange, hose fitting with safety
collar according to EN 14423

Type DF

hose fitting, heavy design with fixed flange,
hose fitting with safety collar according
to EN 14423

DN: Internal hose diameter in mm

Materials:

For the abbreviation, see Materials register

Other pressure ratings upon request

Hose fitting
type DB



Hose fitting
type DF



Order number	DN	Flange	Material Socket/Flange
DB 013ST DB 013SSST	13 (1/2")	DN 16 PN 40	ST/ST SS/ST
DB 013SSST DF 013ST DF 013SS	13 (1/2")	DN 16 PN 40	SS/ST ST/ST SS/SS
DB 013ASA150ST DB 013ASA150ST	13 (1/2")	ASME B16.3 150 lbs. 1/2"	ST/ST SS/ST
DB 013ASA300ST DF 013ASA300ST	13 (1/2")	ASME B16.3 300 lbs. 1/2"	ST/ST ST/ST
DB 019ST DB 019SSST	19 (3/4")	DN 20 PN 40	ST/ST SS/ST
DB 019SSST DF 019ST DF 019SS	19 (3/4")	DN 20 PN 40	SS/ST ST/ST SS/SS
DB 019ASA150ST DF 019ASA150ST	19 (3/4")	ASME B16.3 150 lbs. 3/4"	ST/ST ST/ST
DB 019ASA300ST DF 019ASA300ST	19 (3/4")	ASME B16.3 300 lbs. 3/4"	ST/ST ST/ST
DB 025ST DB 025SSST	25 (1")	DN 25 PN 40	ST/ST SS/ST
DB 025SSST DF 025ST DF 025SS	25 (1")	DN 25 PN 40	SS/ST ST/ST SS/SS
DB 025ASA150ST DF 025ASA150ST	25 (1")	ASME B16.3 150 lbs. 1"	ST/ST ST/ST
DB 025ASA300ST DF 025ASA300ST	25 (1")	ASME B16.3 300 lbs. 1"	ST/ST ST/ST
DB 032ST DB 032SSST	32 (1 1/4")	DN 32 PN 40	ST/ST SS/ST
DB 032SSST DF 032ST DF 032SS	32 (1 1/4")	DN 32 PN 40	SS/ST ST/ST SS/SS
DB 032ASA150ST DF 032ASA150ST	32 (1 1/4")	ASME B16.3 150 lbs. 1 1/4"	ST/ST ST/ST
DB 032ASA300ST DF 032ASA300ST	32 (1 1/4")	ASME B16.3 300 lbs. 1 1/4"	ST/ST ST/ST

Order number	DN	Flange	Material Socket/flange
DB 038ST DB 038SSST	38 (1 1/2")	DN 40 PN 40	ST/ST SS/ST
DB 038SSST DF 038ST DF 038SS	38 (1 1/2")	DN 40 PN 40	SS/ST ST/ST SS/SS
DB 038ASA150ST DF 038ASA150ST	38 (1 1/2")	ASME B16.3 150 lbs. 1 1/2"	ST/ST ST/ST
DB 038ASA300ST DF 038ASA300ST	38 (1 1/2")	ASME B16.3 300 lbs. 1 1/2"	ST/ST ST/ST
DB 050ST DB 050SSST	50 (2")	DN 50 PN 40	ST/ST SS/ST
DB 050SS DF 050ST DF 050SS	50 (2")	DN 50 PN 40	SS/SS ST/ST SS/SS
DB 050ASA150ST DF 050ASA150ST	50 (2")	ASME B16.3 150 lbs. 2"	ST/ST ST/ST
DB 050ASA300ST DF 050ASA300ST	50 (2")	ASME B16.3 300 lbs. 2"	ST/ST ST/ST

Your notes

